



Computer Generated Image. Elevations may vary from plot to plot.

# The Fisher

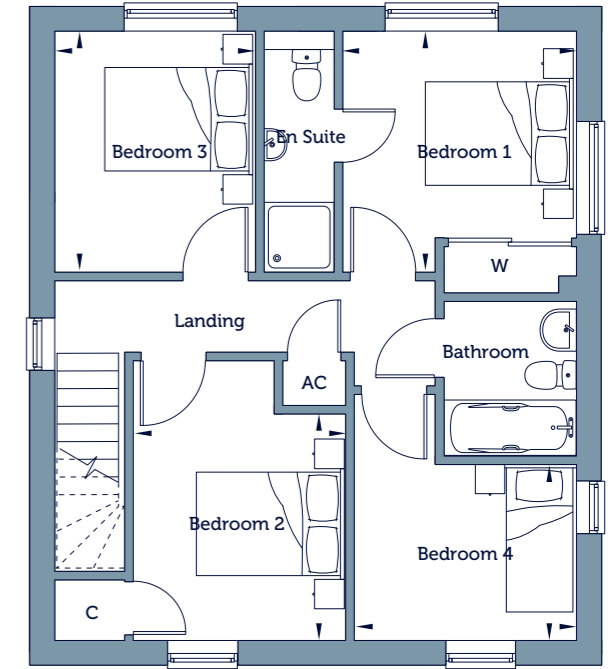
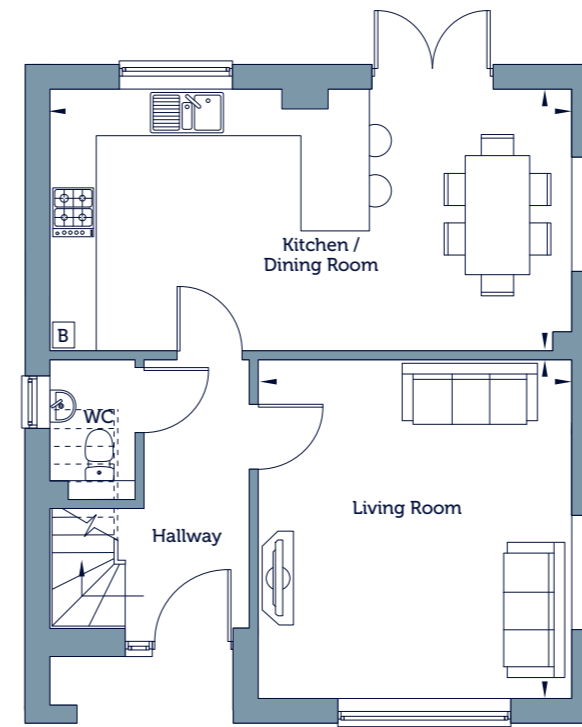
The Fisher is an attractive four bedroom home. On the ground floor the hallway leads to a large kitchen/dining room with doors into the garden. Also on the ground floor is a WC and well-proportioned living room.

On the first floor where you'll find the main bedroom to the rear with en-suite shower room and built-in wardrobe a family bathroom and three further bedrooms.



# The Fisher

Market Sale 11, 21, 55 and 98



## Ground Floor

Living Room	14'4" x 13'3"	4.38m x 4.06m
Kitchen / Dining Room	11'1" x 22'2"	3.40m x 6.76m

## First Floor

Bedroom 1	8'9" x 9'11"	2.68m x 3.03m
Bedroom 2	9'6" x 9'0"	2.92m x 2.75m
Bedroom 3	10'2" x 8'6"	3.12m x 2.60m
Bedroom 4	7'4" x 9'5"	2.26m x 2.88m

Gross Internal Area	1163 sq ft	108 sq m
---------------------	------------	----------

## Handed Plot 55

\*Window locations may vary, refer to plot specific plans at time of reservation.

## Key

B Boiler AC Airing Cupboard C Cupboard W Fitted Wardrobe

Floorplans are not drawn to scale. Measurements are taken from areas marked ►. They are maximum approximate dimensions and given as a guide only. These should not be used as a basis for purchasing flooring or furniture. We reserve the right to alter plans, specification, position of doors and windows and change tenure subject to demand without prior notice. External elevations vary from plot to plot. Please ask your Sales Consultant for current information when reserving your new home. Computer generated image overleaf. Information correct at time of going to print.